

Roman Shades

Installation Instructions

Congratulations on purchasing Roman Shades from YourBlinds. To properly set up these shades in your home, follow these installation instructions as closely as possible.

Step 1: Tools for the Job

To get started, locate the following tools and keep them handy while you work:

- **Screwdriver**
- **Tape measure**
- **Pencil**
- **Drill**
- **Level**
- **Step stool**

Step 2: Check Your Package Contents

In addition to your tools, make sure that you have the following items for installation:

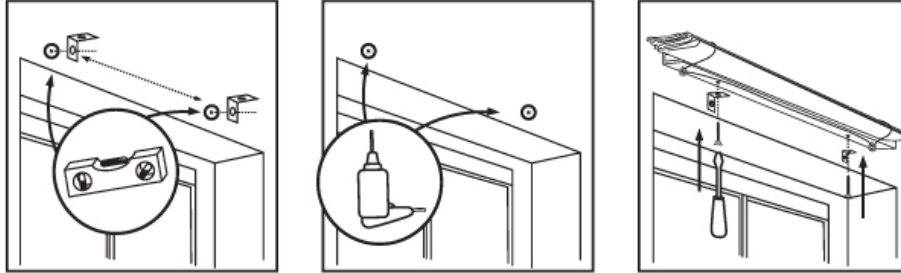
Part	Quantity
Mounting bracket Note: Brackets are for Outside Mounts only.	2 (shades up to 36" wide) 3 (shades 36" to 48" wide) 4 (shades 48" to 96" wide)
1 1/4" Screws	2 (shades up to 36" wide) 3 (shades 36" to 48" wide) 4 (shades 48" to 96" wide)
3/4" Screws Note: 3/4" screws are for Outside Mounts only.	2 (shades up to 36" wide) 3 (shades 36" to 48" wide) 4 (shades 48" to 96" wide)

Tips for Installing Shades in Various Wall Materials

Follow these instructions to install your shades in a variety of different wall types:

- **Wallboard or plaster**
Use anchors designed for hollow walls (not included with your blinds).
- **Concrete, stone, or brick**
Use a masonry drill bit and anchors or screws specifically designed for masonry (not included with your blinds).

Step 3: Mounting your Roman Shades



Instructions for Outside Mounting

To mount your Roman Shades outside of your window sill, position one bracket 2” to 6” from each end of the head rail. If you purchased extra wide shades that require 3 or 4 brackets, space the inner brackets evenly between the two brackets supporting the end shade.

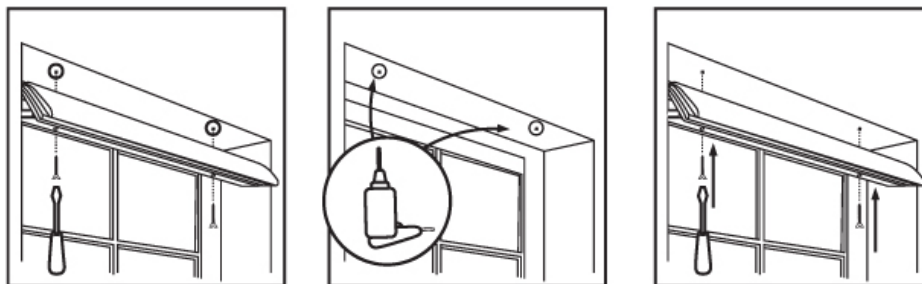
Make sure the brackets don’t interfere with the cord guides or cord lock and that they don’t interfere with the movement of the lift cords. To prevent this, hold the shade in place at its desired installation location and mark the bracket locations with a pencil.

To ensure that your brackets are parallel and even, use a level to maintain proper alignment on every bracket.

When creating the mounting holes for the brackets, pre-drill them using a 5/64” drill bit before screwing the brackets into place.

Once the brackets are installed, place the head rail on top of the brackets and center the shade over the window opening. Next, mark the location of each mounting hole on the head rail with a pencil.

Pierce the fabric of the shade at the hole locations with the tip of a screw—then, attach the shade to the brackets using the 3/4” screws that came with your order from YourBlinds.



Instructions for Inside Mounting

To mount your Roman Shades on the inside of your window sill, screw the included 1 1/4" screws into the head rail until the tips extended beyond the top of the head rail.

Align the front of the shade with the front edge of the window opening so that the shade is centered over it.

Then, push up on the head rail until the screw heads leave marks in the top of the window frame.

Use the marks you created with the screw heads as a guide and drill mounting holes using a 5/64" drill bit.

After you've created the mounting holes, screw the shade into place.

Tips for Operating Your Shades

Follow these instructions to properly operate your Roman Shades from YourBlinds and keep them working flawlessly for years to come:

- **Raising the shade**
To raise the shade, pull the lift cord slightly. This releases the cord lock and allows you to raise the shade to its desired height. Move the cord slightly to the outside of the shade to lock it in this position.
- **Lowering the shade**
To lower the shade, pull the lift cord slightly and move it towards the middle of the shade. Slowly release the cord and allow the shade to drop as you release slack in the cord. Pull the cord back to the outside of the shade to stop its descent and lock it back into place.

Tips for Cleaning Your Shades

Your shades require frequent cleaning to keep them in top condition. To properly clean Roman Shades, use a feather duster or vacuum's soft brush or upholstery attachment to remove dust, pet hair, and dirt on a regular basis. To remove stains, consult a professional drapery cleaning service.